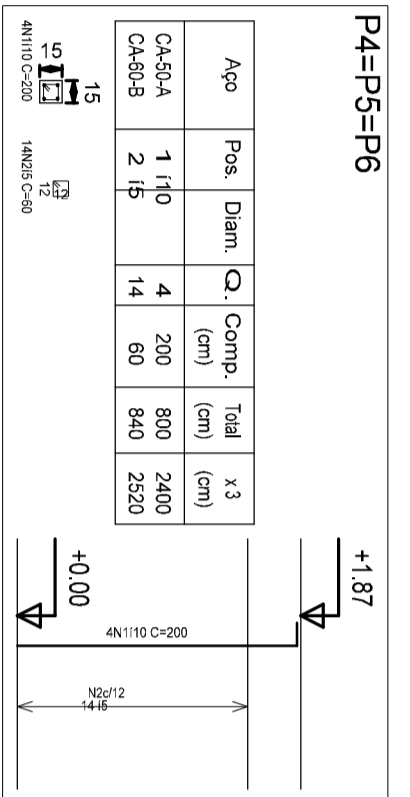


P1=P3
Piso 1
Pilares que terminam em
Concreto: C25 em geral
Aço: CA-50-A e CA-60-B
Escala: 1:50

Aço	Pos.	Diã.	Q.	Comp.	Total	x2
CA-50-A	1	12,5	4	320	1280	2560
CA-60-B	2	15	24	60	1440	2880



Piso 1
Desenho de vigas
Concreto: C18 em geral
Aço: CA-50-A e CA-60-B
Escala vigas: 1:50
Escala seções: 1:20

Aço	Pos.	Diã.	Q.	Comp.	Total	x3
CA-50-A	1	12,5	4	200	800	2400
CA-60-B	2	15	14	60	840	2520

Resumo Aço	Comp. total (m)	Peso+10% (kg)	Total
CA-50-A Vigas	16,3	9,3	3
CA-50-A Pilares	18	51,1	22
CA-60-B Vigas	112,5	8,1	9
CA-60-B Pilares	116	77,2	133
Total	15	274,0	47

Resumo Aço	Comp. total (m)	Peso+10% (kg)	Total
CA-50-A Vigas	110	49,6	34
CA-50-A Pilares	112,5	20,1	22
CA-60-B Vigas	15	66,2	11
CA-60-B Pilares	15	11	11
Total	150	146,9	67

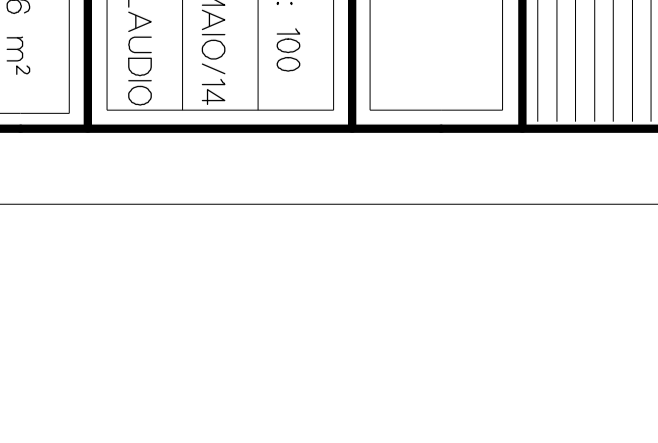
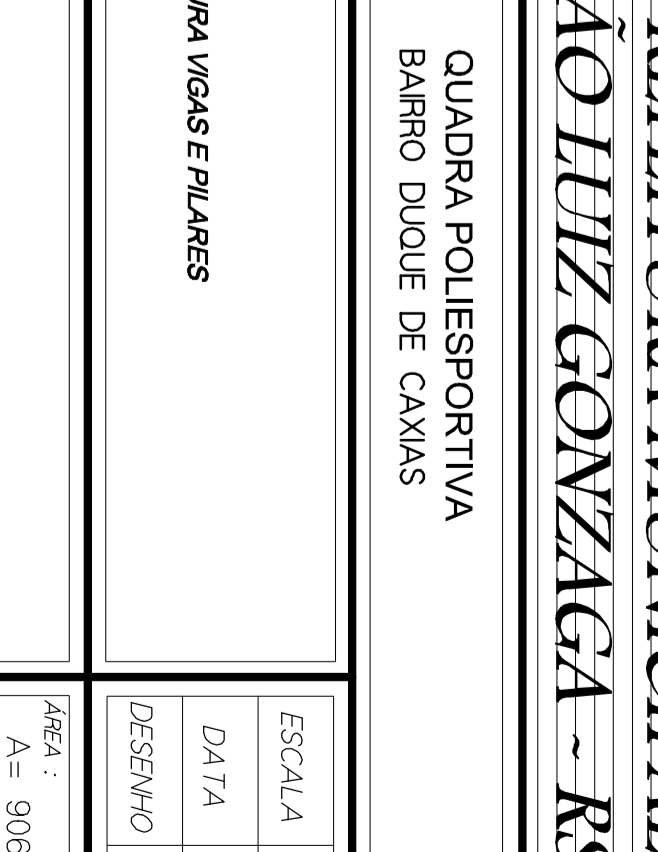
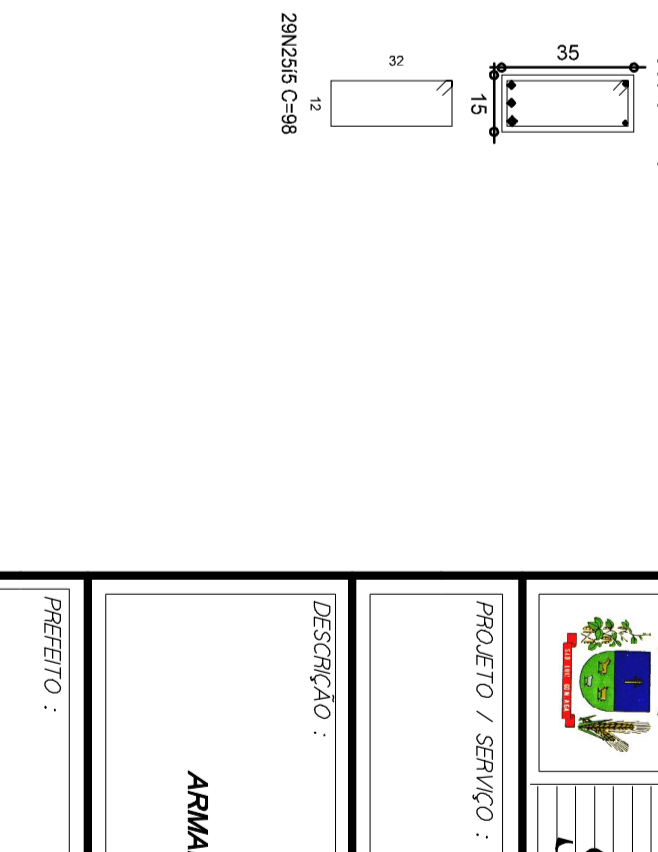
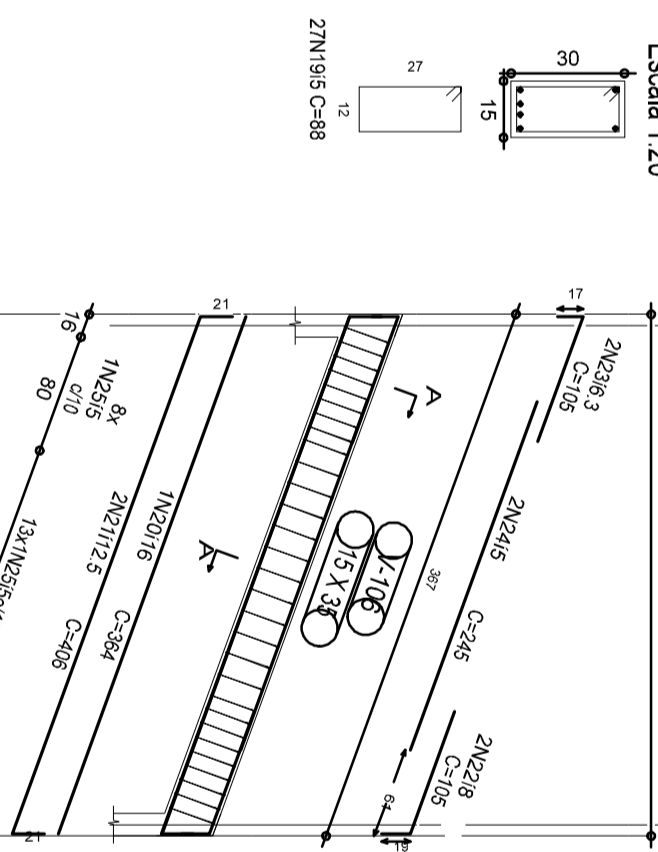
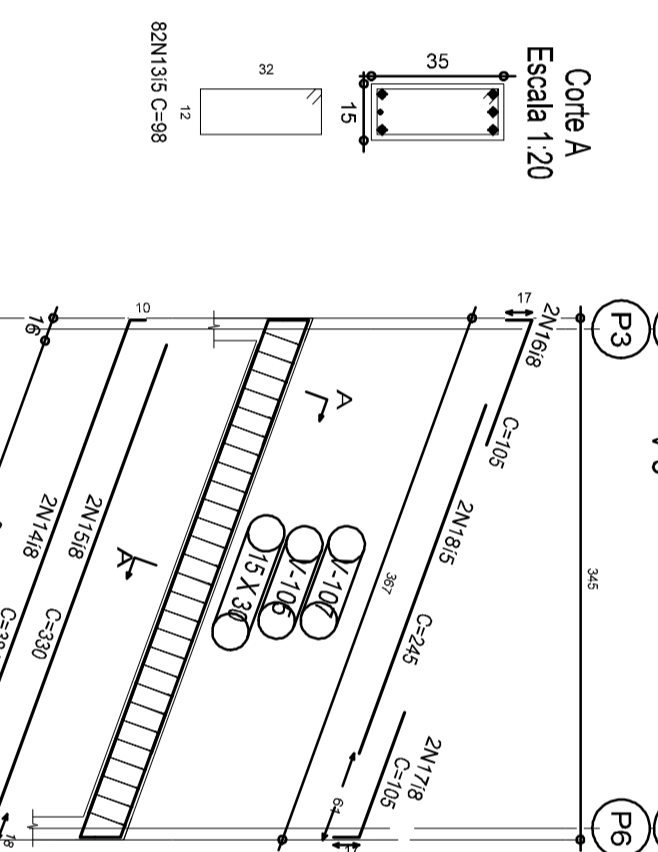
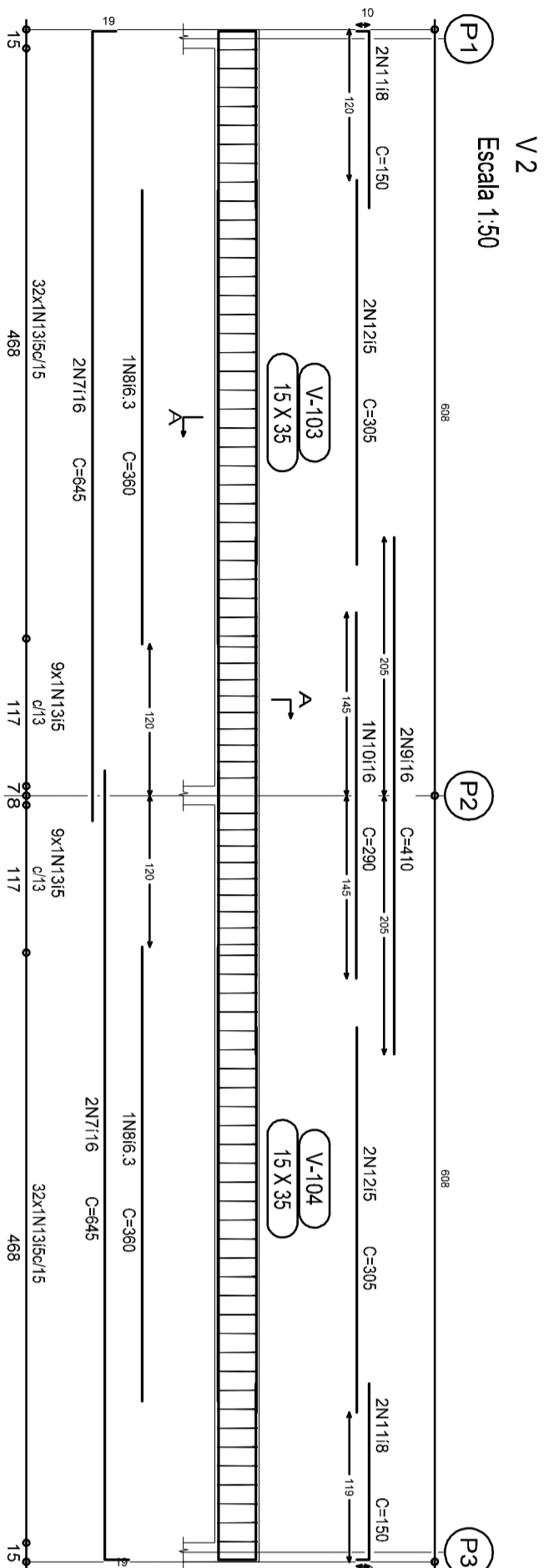
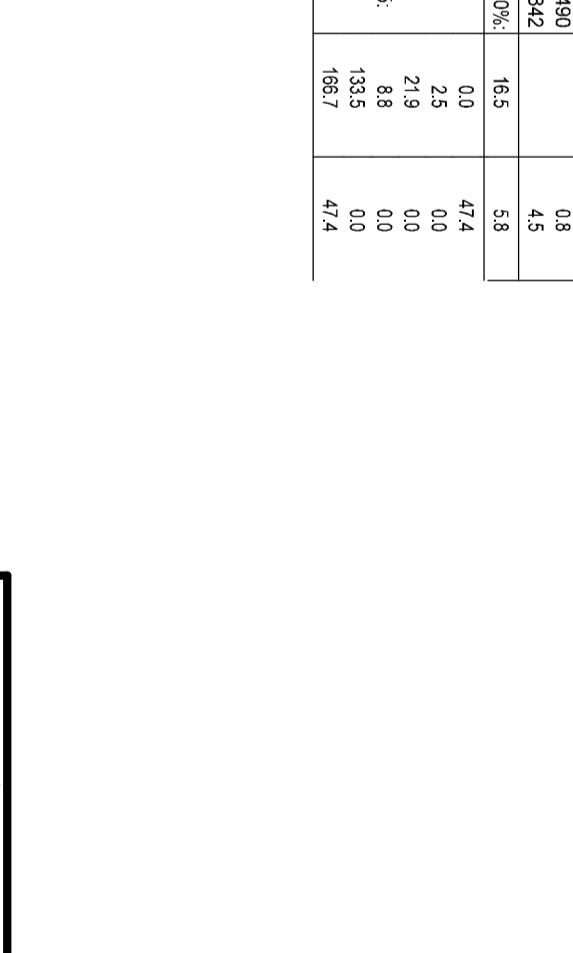
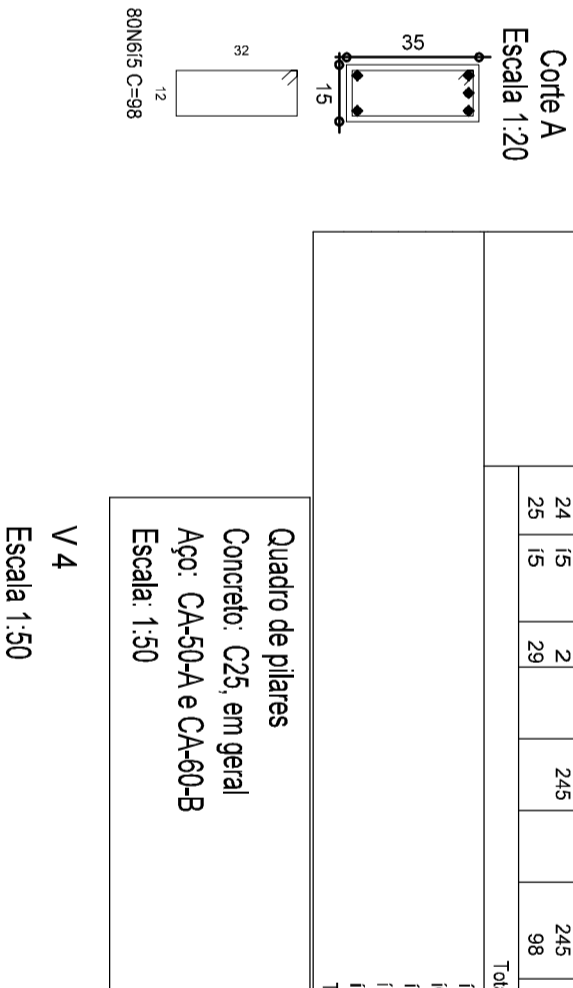
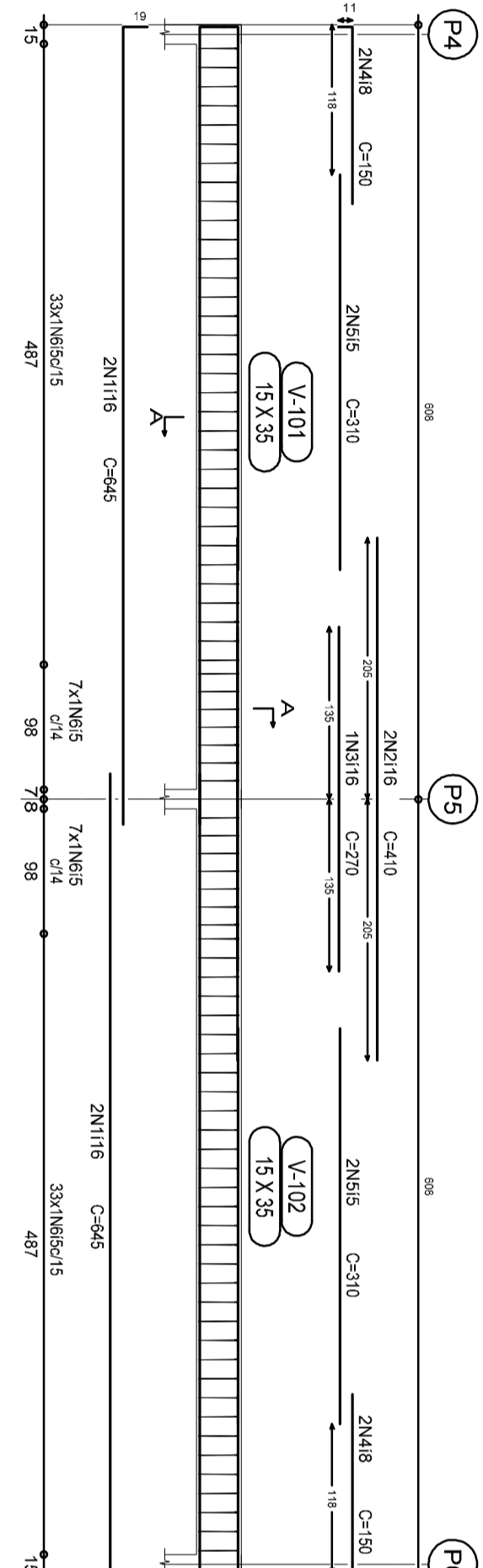
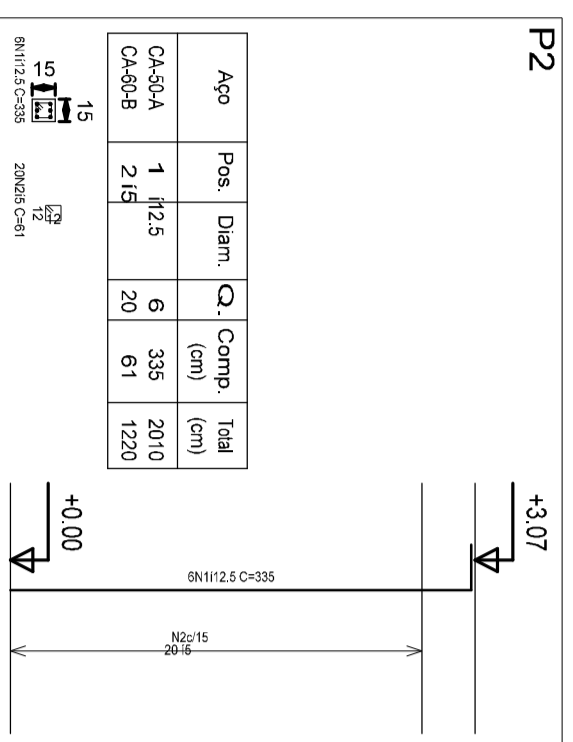
Resumo Aço	Comp. total (m)	Peso+10% (kg)	Total
CA-50-A Vigas	110	64,0	44
CA-50-A Pilares	112,5	20,1	22
CA-60-B Vigas	15	87,0	15
CA-60-B Pilares	15	15	15
Total	150	186,1	81

Resumo Aço	Comp. total (m)	Peso+10% (kg)	Total
CA-50-A Vigas	110	64,0	44
CA-50-A Pilares	112,5	20,1	22
CA-60-B Vigas	15	87,0	15
CA-60-B Pilares	15	15	15
Total	150	186,1	81

Fundação

Elemento	Pos.	Diã.	Q.	Reia (cm)	DoB. (cm)	Comp. (cm)	Total (cm)	CA-50-A (kg)	CA-60-B (kg)
V1	1	116	4	19	626	645	2590	40,5	15,6
	2	116	2	19	470	490	220	12,8	5,0
	3	116	2	17	330	350	160	9,3	3,7
	4	116	2	17	330	350	160	9,3	3,7
	5	116	2	17	330	350	160	9,3	3,7
	6	116	2	17	330	350	160	9,3	3,7
V2	7	116	4	19	626	645	2590	40,5	15,6
	8	116	2	19	470	490	220	12,8	5,0
	9	116	2	17	330	350	160	9,3	3,7
	10	116	2	17	330	350	160	9,3	3,7
	11	116	2	17	330	350	160	9,3	3,7
	12	116	2	17	330	350	160	9,3	3,7
V3+V5	13	116	4	19	626	645	2590	40,5	15,6
	14	116	2	19	470	490	220	12,8	5,0
	15	116	2	17	330	350	160	9,3	3,7
	16	116	2	17	330	350	160	9,3	3,7
	17	116	2	17	330	350	160	9,3	3,7
	18	116	2	17	330	350	160	9,3	3,7
V4	19	116	2	17	330	350	160	9,3	3,7
	20	116	1	21	364	384	178	10,0	4,7
	21	116	2	21	364	384	178	10,0	4,7
	22	116	2	17	330	350	160	9,3	3,7
	23	116	2	17	330	350	160	9,3	3,7
	24	116	2	17	330	350	160	9,3	3,7
V4	25	116	2	17	330	350	160	9,3	3,7
	26	116	2	17	330	350	160	9,3	3,7
	27	116	2	17	330	350	160	9,3	3,7
	28	116	2	17	330	350	160	9,3	3,7
	29	116	2	17	330	350	160	9,3	3,7
	30	116	2	17	330	350	160	9,3	3,7
V4	31	116	2	17	330	350	160	9,3	3,7
	32	116	2	17	330	350	160	9,3	3,7
	33	116	2	17	330	350	160	9,3	3,7
	34	116	2	17	330	350	160	9,3	3,7
	35	116	2	17	330	350	160	9,3	3,7
	36	116	2	17	330	350	160	9,3	3,7

Quadro de pilares
Concreto: C25, em geral
Aço: CA-50-A e CA-60-B
Escala: 1:50



PREFEITURA MUNICIPAL
SÃO LUIZ GONZAGA - RS

PROJETO / SERVIÇO :
QUADRA POLIESPORTIVA
BARRIO DUQUE DE CAXIAS

DESENHADOR :
ARMADURA VIGAS E PILARES

PREFEITO :
ÁREA : A = 906,26 m²

RESPONSÁVEL TÉCNICO :
PRANCHETA : **09**

ESCALA 1 : 100
DATA MAIO/14
DESENHO CLAUDIO